

TellStick User Manual

Welcome

Thank you for choosing a Telldus Technologies product. This manual will help you install and use the TellStick. We recommend that you read through the entire manual before getting started.

Please feel free to join our forum at www.telldus.com in order to communicate with other users and developers!

Installing TellStick

1. Software Installation

ATTENTION! Install the software before connecting TellStick to your USB-connection!

Download and start the installation software from www.telldus.com.

1.1 Select Language



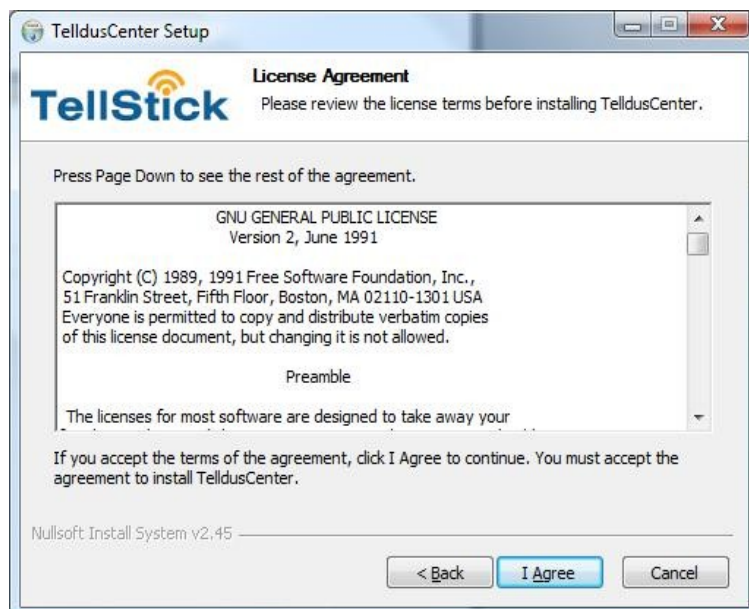
Choose "English" from the menu.

1.2 Welcome



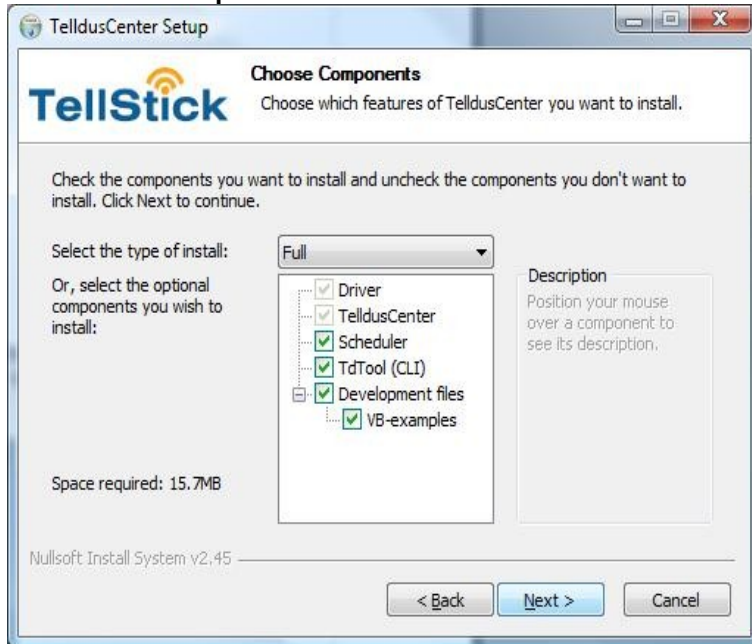
Click on "Next" to continue.

1.3 License Agreement



Read through the license agreement and click on "I Agree" if you accept the agreement. If you do not accept the licence agreement the installation will be cancelled.

1.4 Choose Components



Here you can choose which components to install on your computer. The following options are available:

Full – Installs all included components.

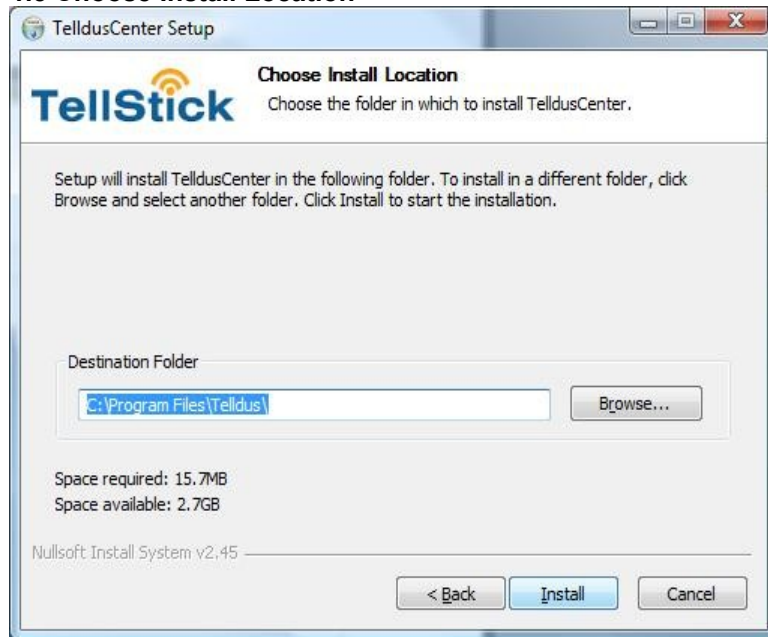
Minimum – Only installs the driver and configuration tool.

Developer – Installs the necessary components for developing software.

Optional – You choose which components to install.

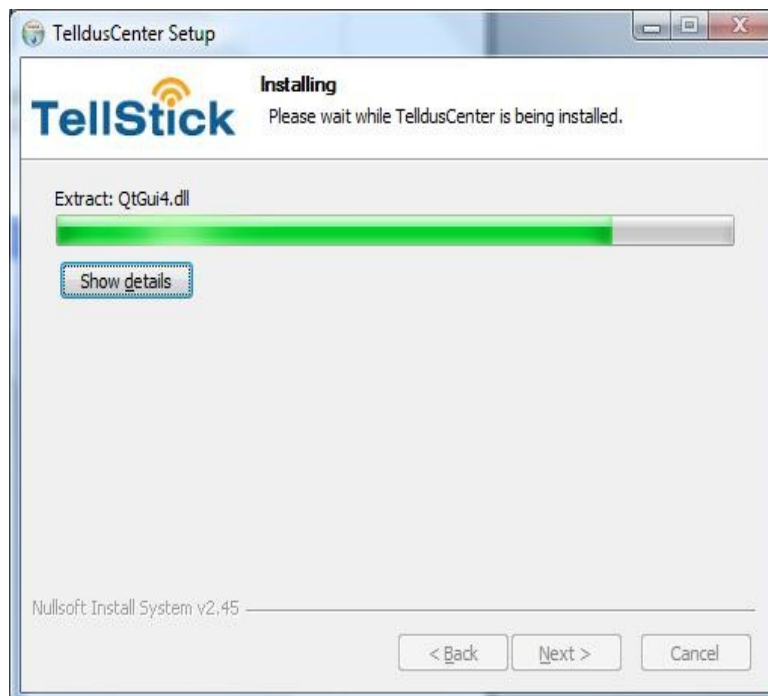
As the you place the mouse pointer over a component you will see a short description of each component to the right.

1.5 Choose Install Location



Here you can choose in what computer directory you wish to install the TellStick software. We recommend the default installation directory, but you can of course choose another directory. Click on "Install".

1.6 Installation

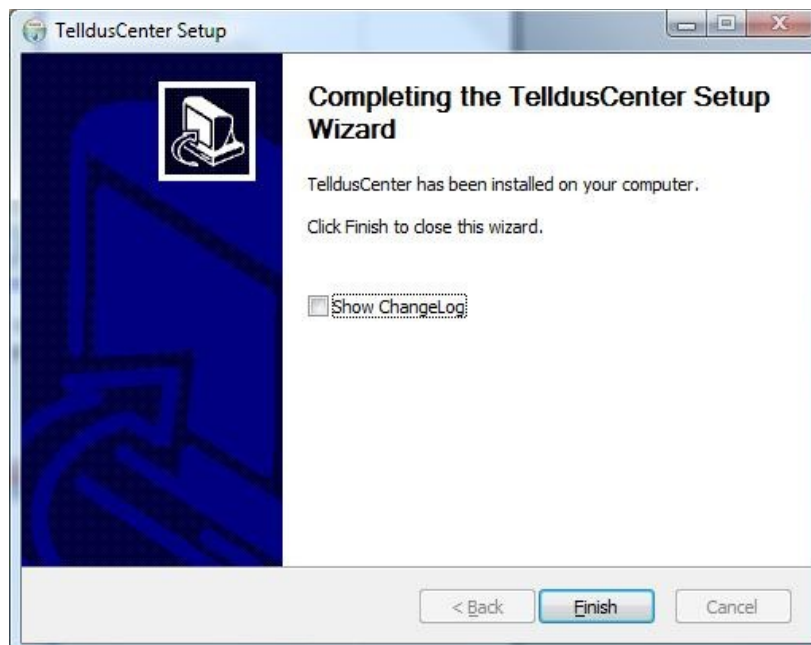


At this point TellStickCenter is being installed for the TellStick.



The Telldus driver has not yet been certified by Microsoft. This is why the above window may appear during installation. However, the driver originates from FTDI Ltd. and is completely safe. Click on "Continue Anyway" to continue the installation.

1.7 Complete



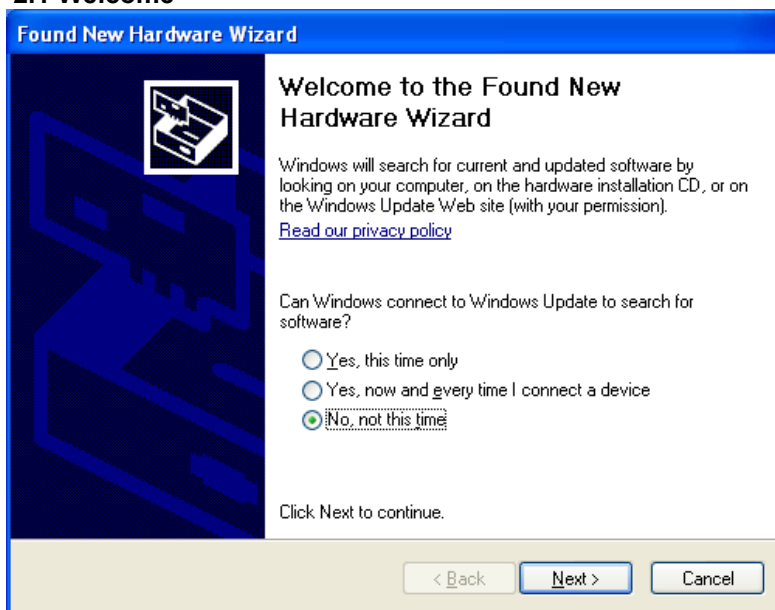
The software installation is now complete. Click on "Finish".

2. Hardware Installation

Connect TellStick to a free USB port on your computer.
The below text will now appear in the right hand corner of the screen:

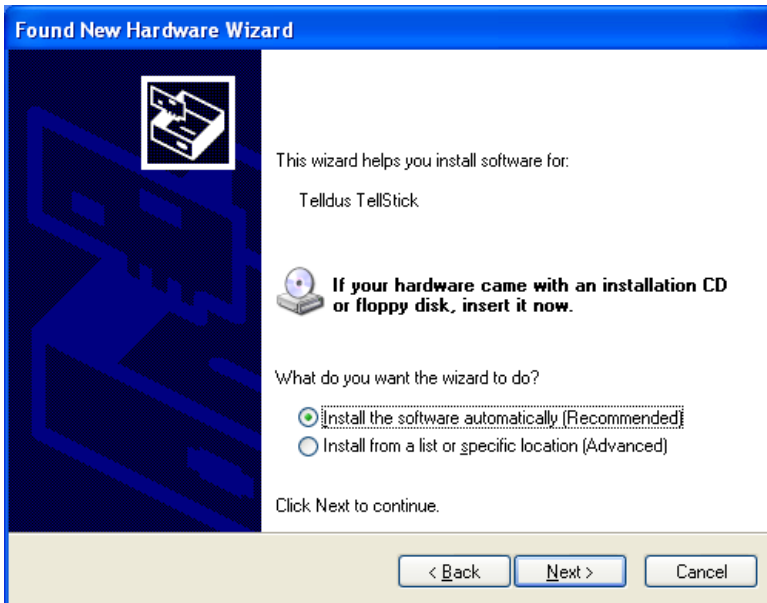


2.1 Welcome



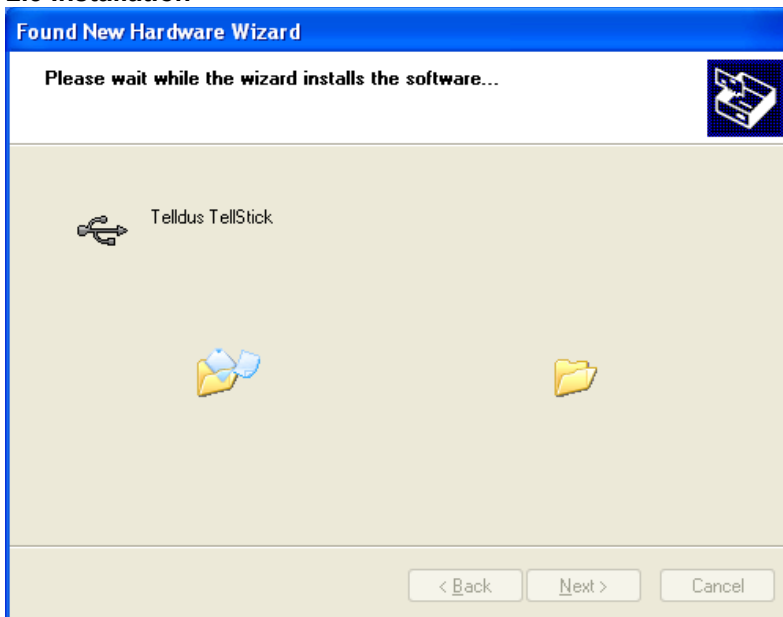
Choose "No, not this time". Click on "Next".

2.2 Install the software automatically



Choose "Install software automatically (recommended)". Click on "Next".

2.3 Installation

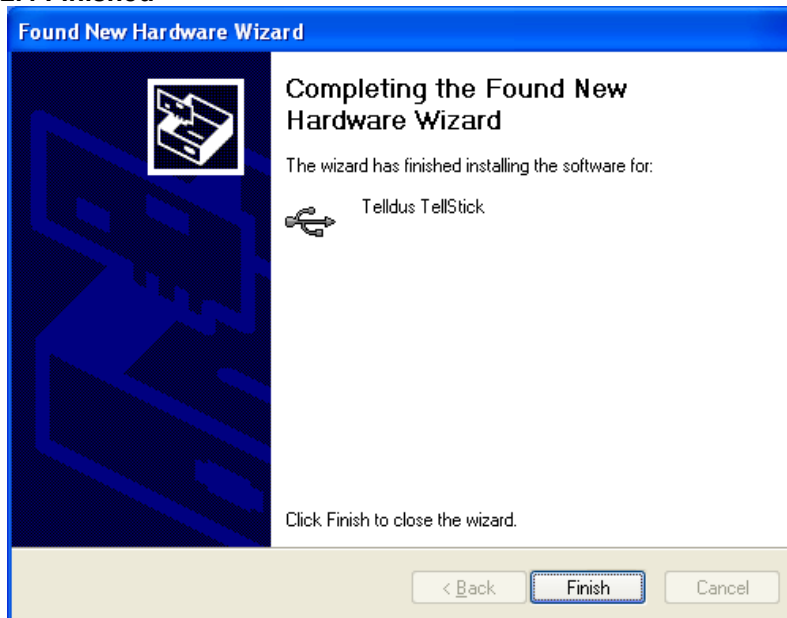


The hardware is now being installed.



The Tellus driver has not yet been certified by Microsoft. This is why the above window may appear during installation. However, the driver originates from FTDI Ltd. and is completely safe. Click on “Continue Anyway” to continue the installation.

2.4 Finished



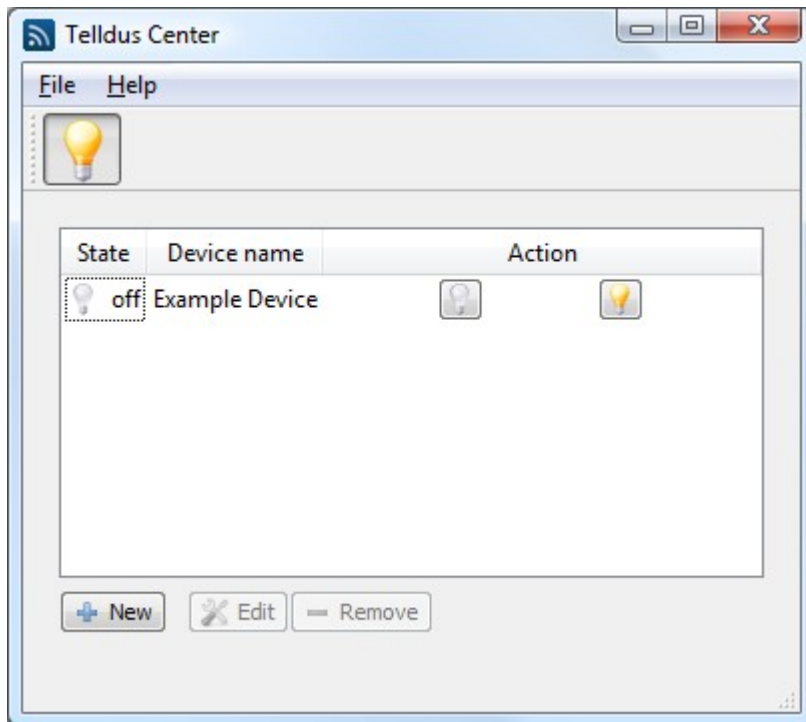
When the installation is complete this screen appears. Click on “Finish” and the installation is complete.

TelldusCenter

Receivers can be added, edited and removed with TelldusCenter. The TelldusCenter is started from the start menu “All programs” > ”Telldus” > “TelldusCenter”.

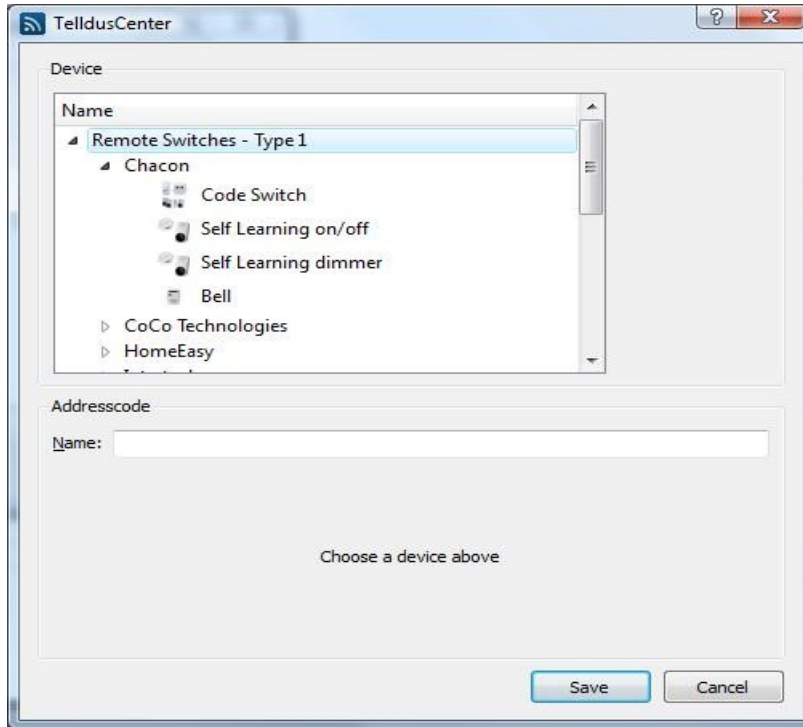
TelldusCenter can as well be accessed from the SysTray.

1. Add New Device



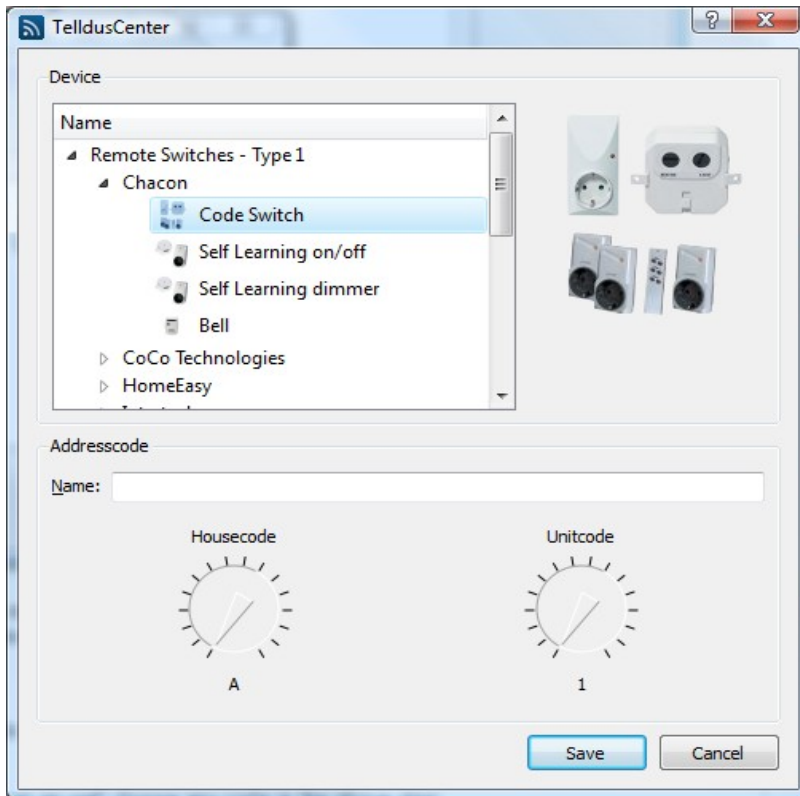
Click on “New”.

1.1 Name



Under Name choose the type of remote switch (or projector screen) and manufacturer you want to add. A device must as well be picked from the chosen manufacturer. Give the chosen device a name under Address Code in the Name box.

1.2 Address Code



Under Address Code make sure that the two codes are matched. The communication between TellStick and the receiver will not work if the codes are not matched.

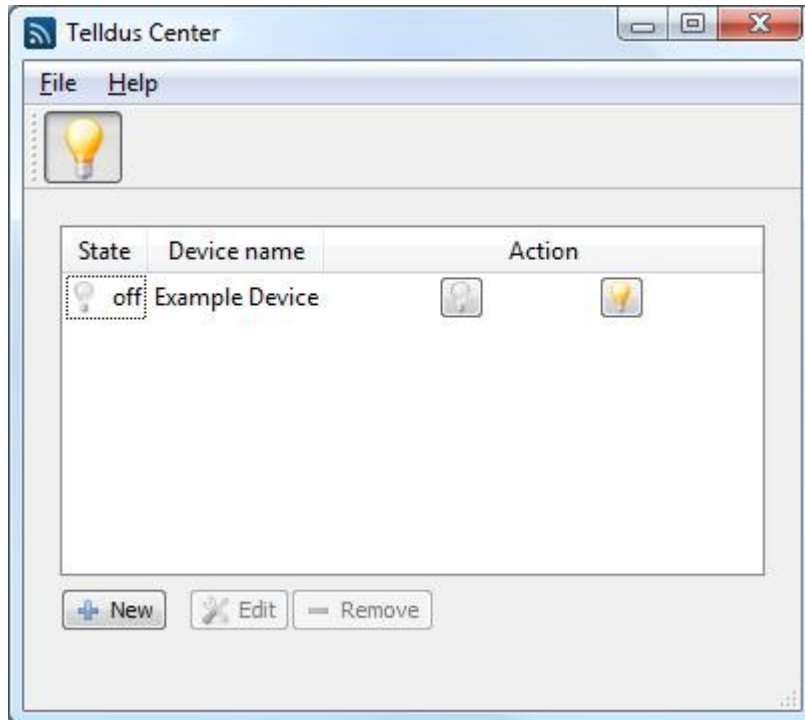
Click on "Save".

For Self Learning devices you can choose any code in the above step and after saving proceed by pressing "Learn."

For Bell devices you can as well choose any code in the above step.

For Kjell o Company, Elro, Sartano, Ikea, and Roxcore devices make the appropriate selections in line with the above step.

2. Turn On and Off a Device



To turn on a device select it from the window and click on the yellow light bulb icon. Shut off a device by clicking the grey light bulb icon.

3. Edit a Device

To edit a device select it from the window and click on "Edit" and make the desired changes.

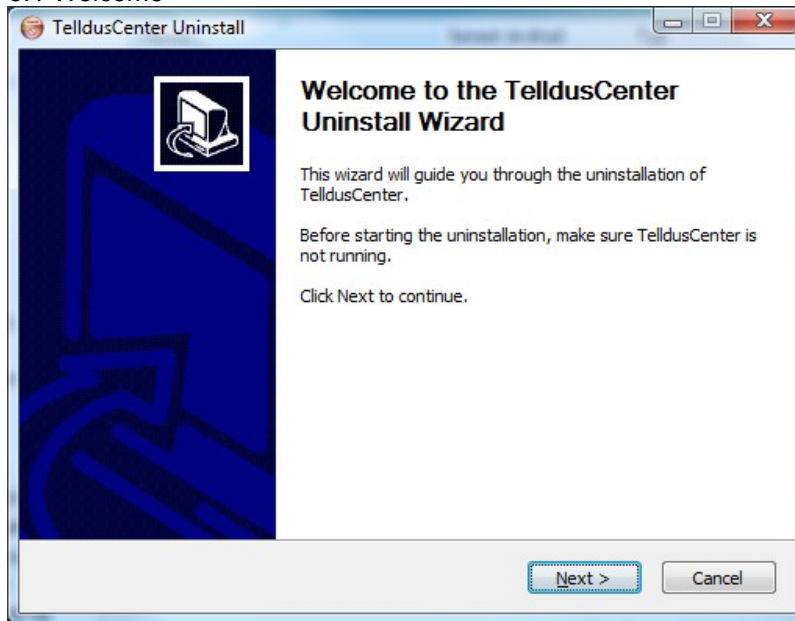
4. Remove a Device

To remove a device select it from the window and click on "Remove". From the pop up window click on "Yes" if you want to go ahead and remove the selected device.

5. Uninstall

To properly uninstall the TellStick open the start menu then “All Programs” > “Telldus” > “Uninstall”.

5.1 Welcome



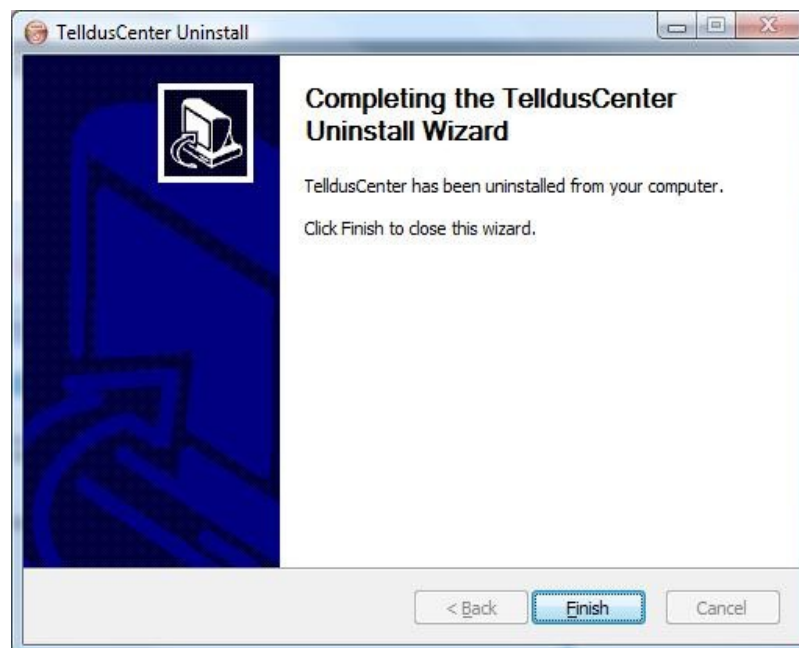
Make sure the TelldusCenter is not running and click on “Next”.

5.2 Uninstall



Click on "Uninstall" to remove TellusCenter from your computer.

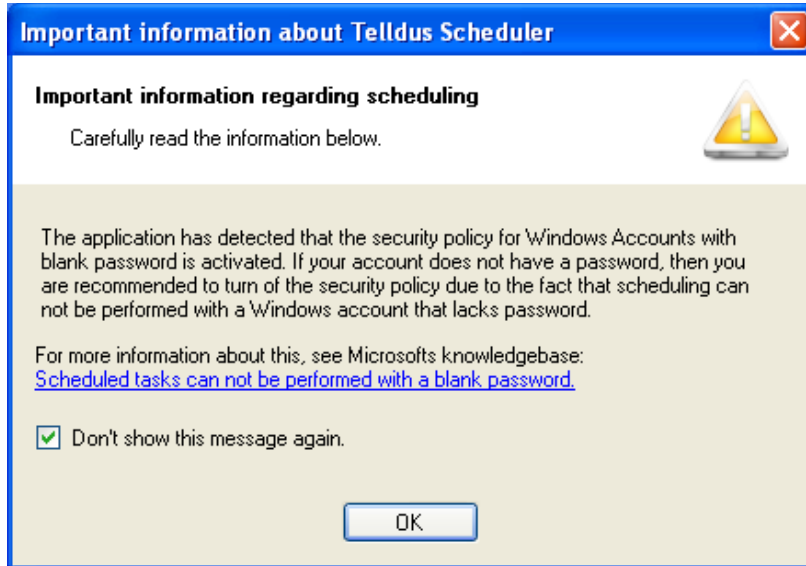
5.3 Finished



Click on "Finish" to close the Uninstall Wizard.

1. Scheduler

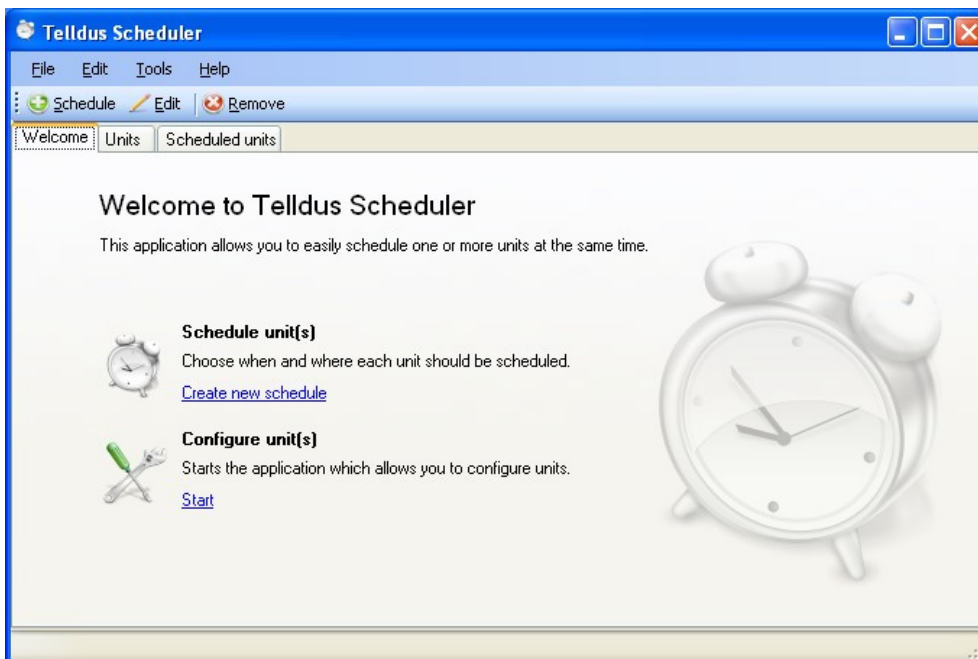
In order to set up schedules for you devices to automatically turn on and off run the program Scheduler under “All Programs” < “Telldus” < “Scheduler”.



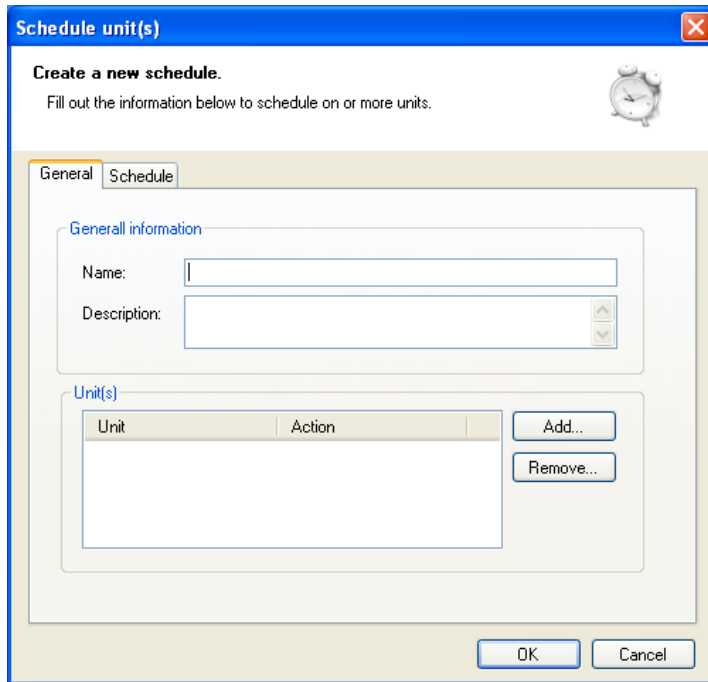
It is possible that the above pop up window appears when the Telldus Scheduler program starts. However, in the case that the window appears it is completely safe to go ahead and click on “OK” in order to start up the Telldus Scheduler program.

2. Device Scheduling

In order to set up an automatic schedule for a device click on “Create New Schedule”.



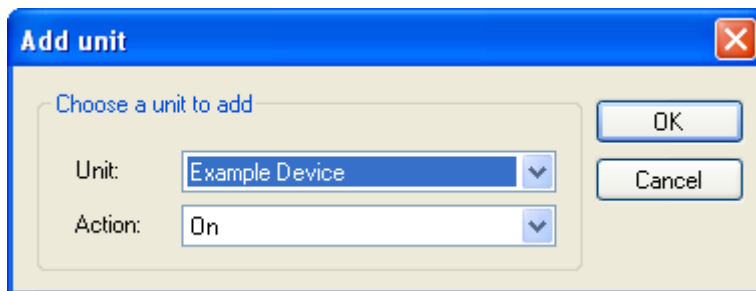
2.1 General



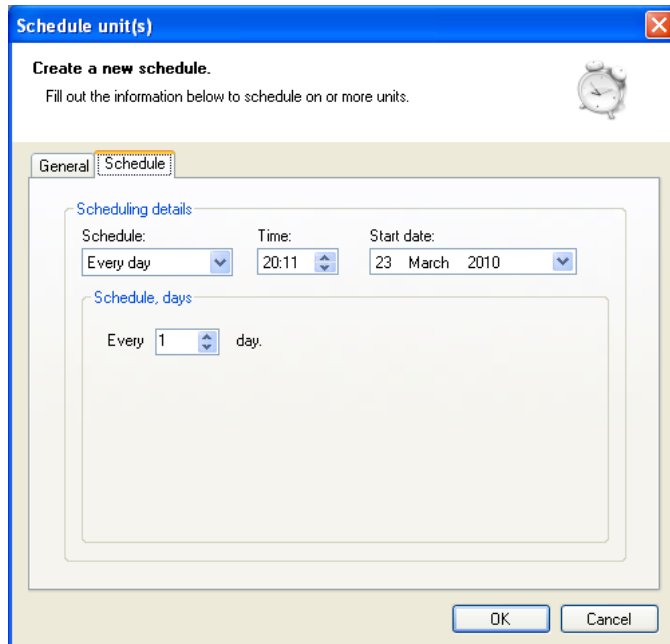
Under the “General” tab give a name in the “Title” box (Tip: choose a name that describes what will happen and on what device). Click on “Add...” in order to choose a device.

2.1.1 Add Device

Chose desired device and action from the menus in the pop up window. Click on “OK”.

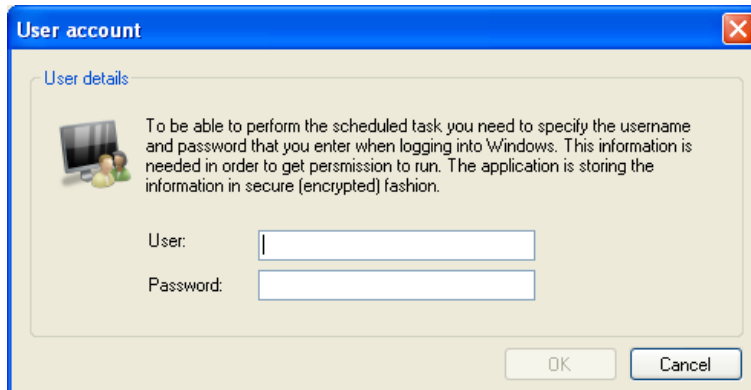


2.2 Scheduling



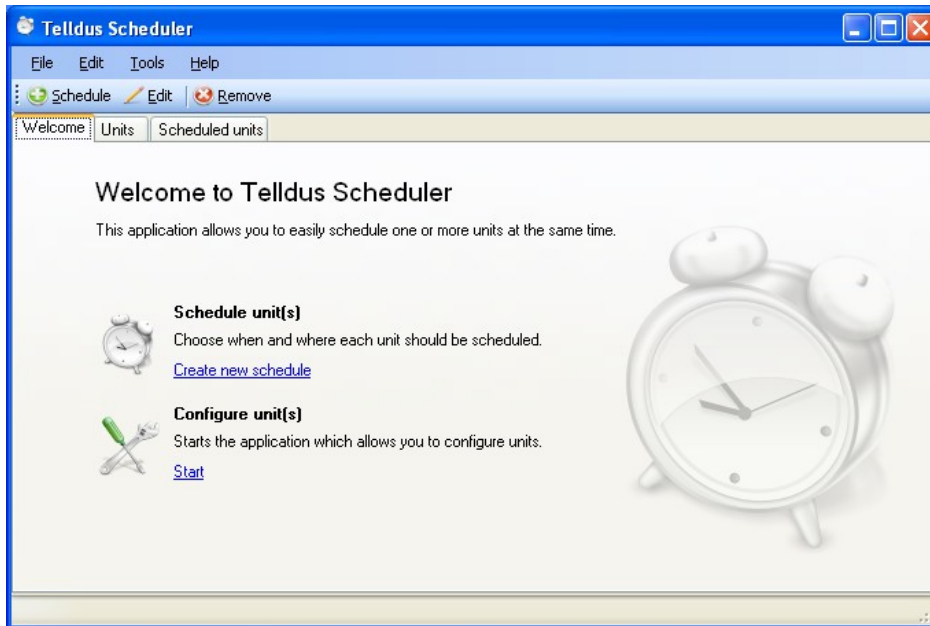
Click on the “Scheduling” tab. Select the desired scheduling information under “Schedule”, “Time”, “Start Date”, and “Scheduling, Days”. Click on “OK”.

2.2.1 User Account



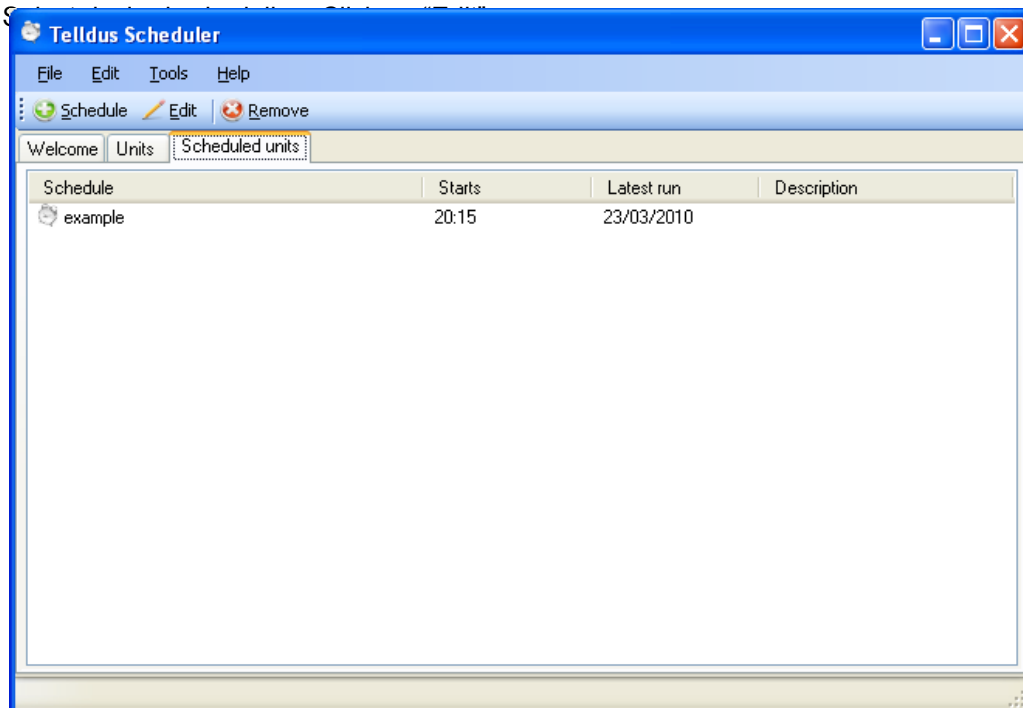
Choose user and give the appropriate password in the pop up window. Click on “OK”.

3. Edit Device Schedule

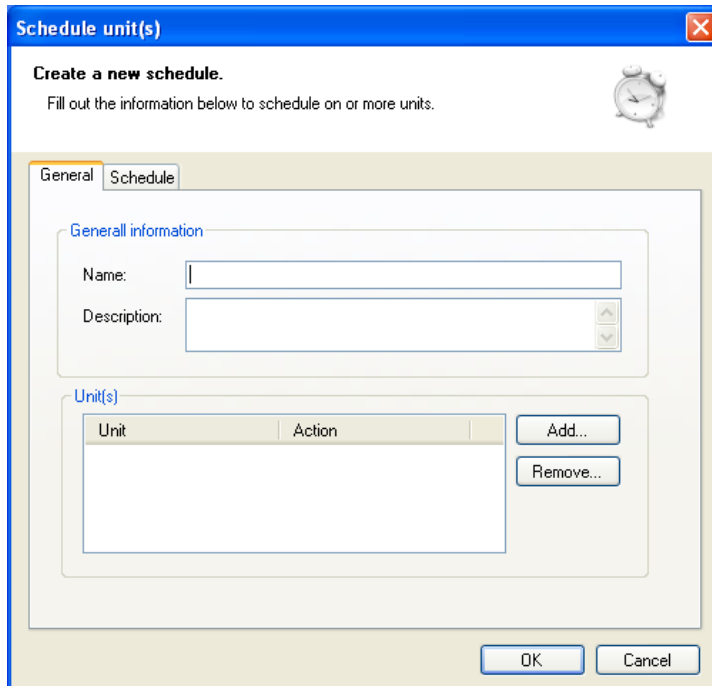


Click on the "Scheduled Devices" tab.

3.1 Scheduled Devices

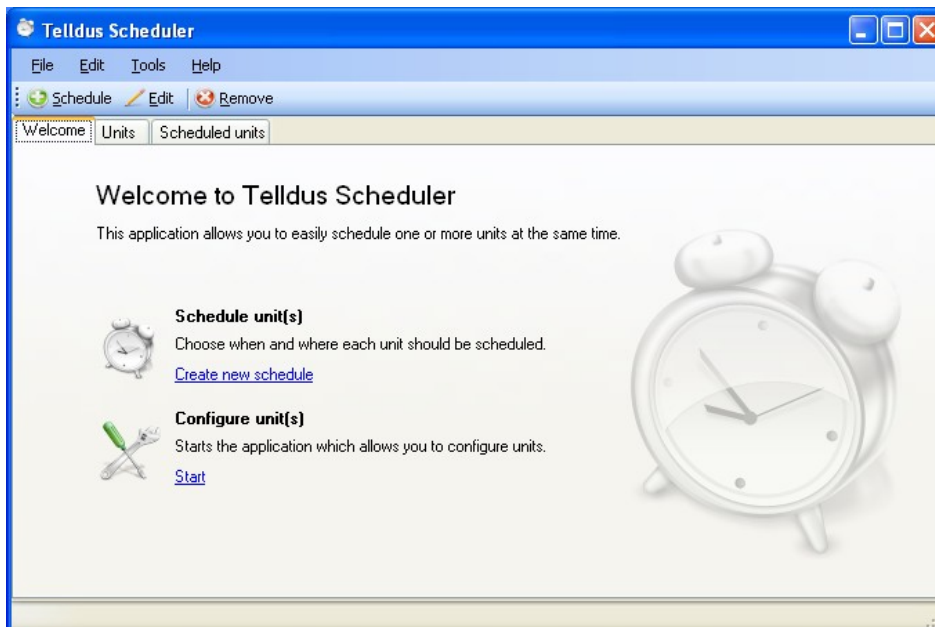


3.2 Editing



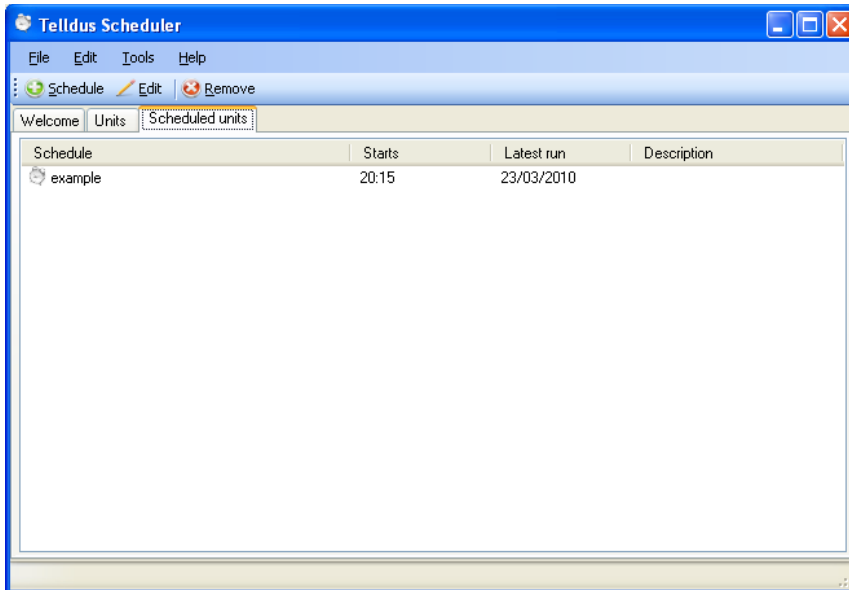
Perform the desired changes under the “General” and “Scheduling” tabs. Click on “OK”.

4. Remove Device Schedule



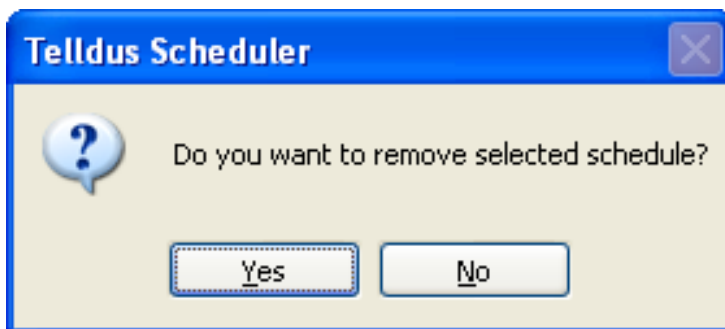
Click on the “Scheduled Devices” tab.

4.1 Scheduled Devices



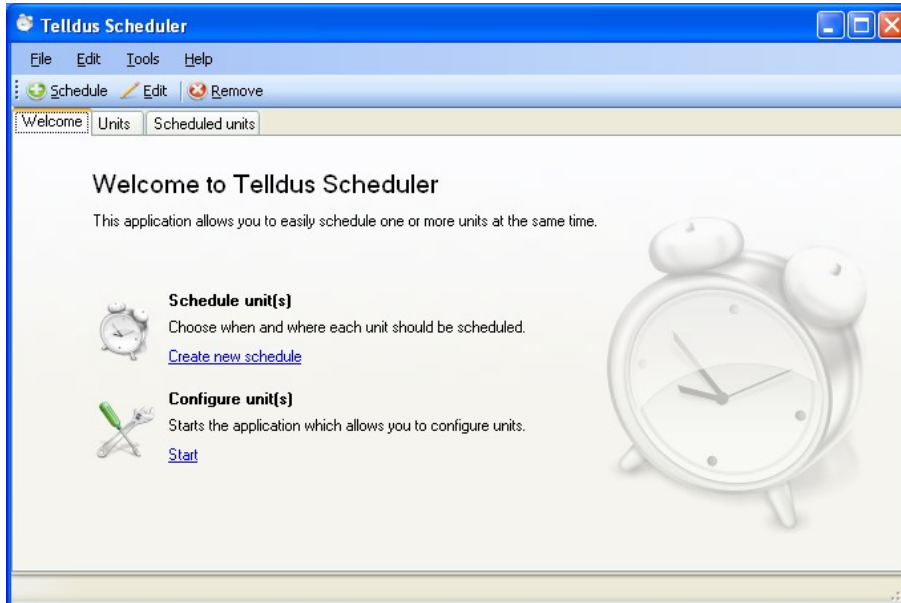
Select desired scheduling. Click on "Remove".

4.1.1 Remove



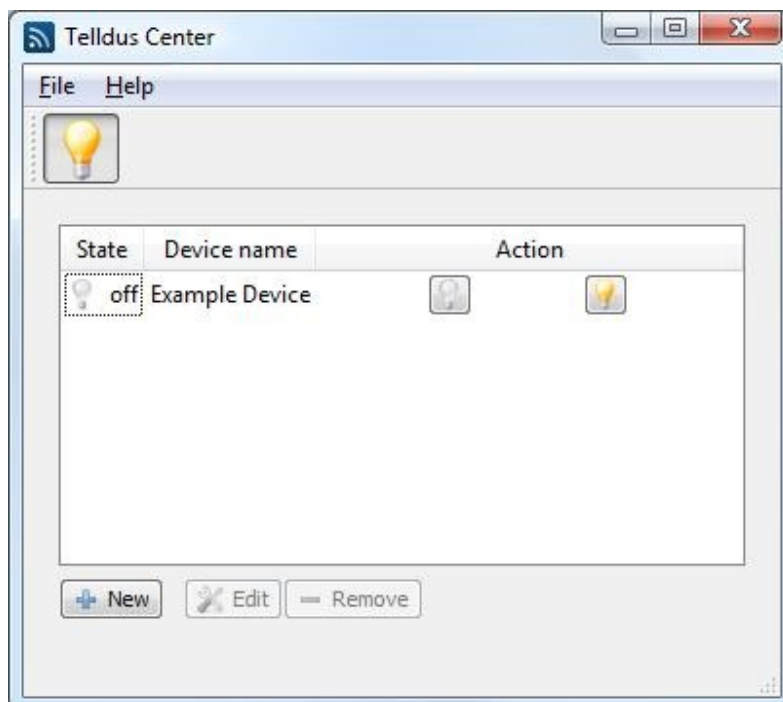
Click on "Yes" if you wish to remove the selected scheduling.

5. Configure Devices



To configure devices click on “Configure Devices” to open TelldusCenter.

5.1 TelldusCenter



Perform the desired change (for more information see the TelldusCenter manual).

Troubleshooting

Problem	Measure
The receiver is not switching on and off	<ul style="list-style-type: none"> • Check that the codes are matched. • Check that the receiver is placed within the TellStick range.
TellStick is not recognized by the computer	<ul style="list-style-type: none"> • Disconnect TellStick and uninstall the software. Then install the software again.
The receivers are not recognizing my commands	<ul style="list-style-type: none"> • Check to make sure that no other 433.92 MHz-products are disrupting the TellStick.

TellStick Care

- Avoid storing or using TellStick in moist environments.
- Do not store TellStick where it is exposed to direct sunlight.
- Remember to use an USB extension cable if it is a possibility that the TellStick may be bent or cracked.

Specifications

Frequency	433.92 MHz – license free
Range	Up to 30 meters
Connection	USB 1.1, 2.0
Power usage	Type: 11 mA, max: 30 mA
Out effect	3.3 mW
Size	60 x 20 x 10 mm