

GUIDE

SCHEDULE AT **SUNRISE/SUNSET**

Since the sunrise and sunset times vary over the year we may want the lights to be scheduled based on the sunset and sunrise times instead of a static time so they don't need to be adjusted. This guide helps you set it up.

LET'S GET STARTED!

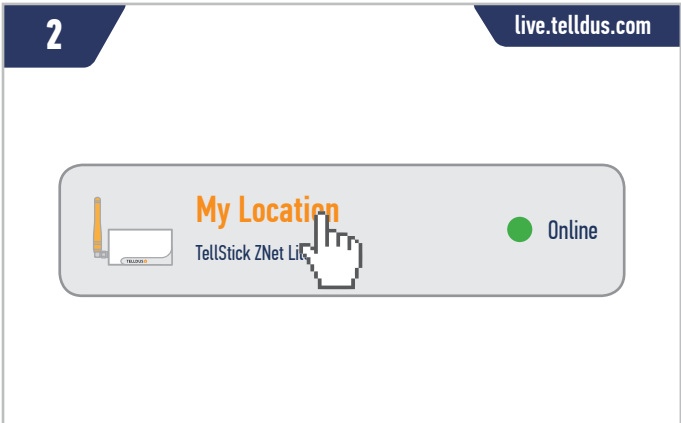
YOU WILL NEED

-  WALL SOCKET RECEIVER
-  TELLSTICK NET/ZNET
-  TELLDUS LIVE!

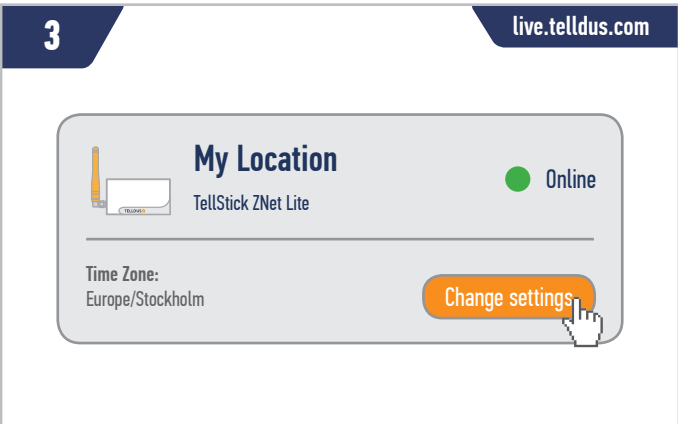
1 live.tellus.com



2 live.tellus.com



3 live.tellus.com



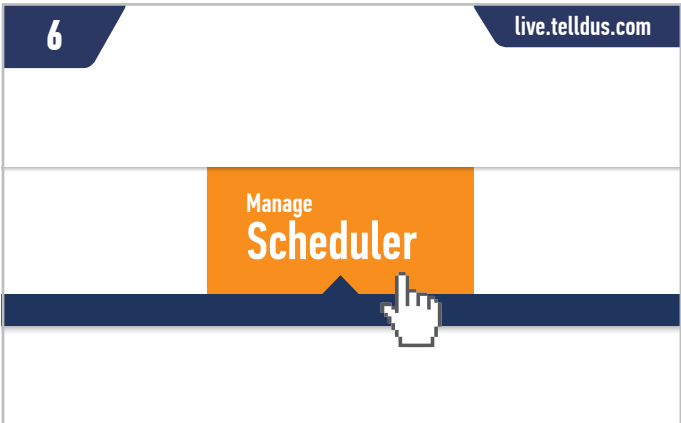
4 live.tellus.com

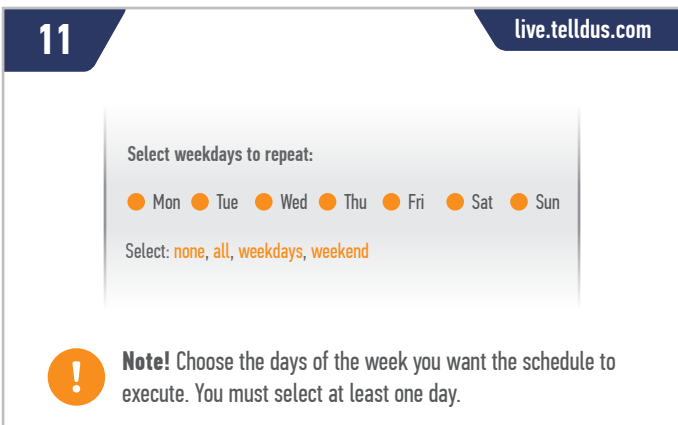
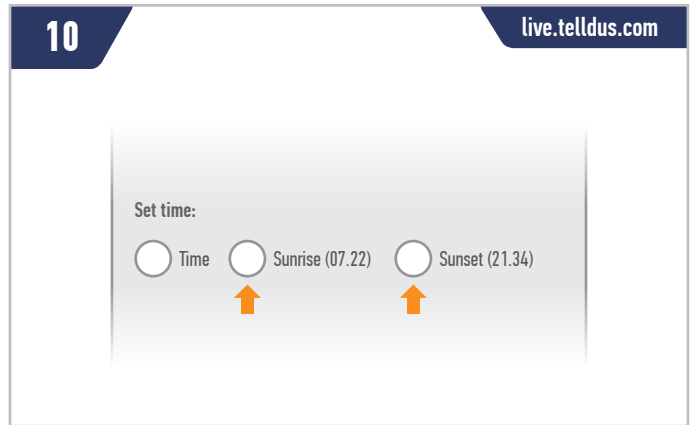
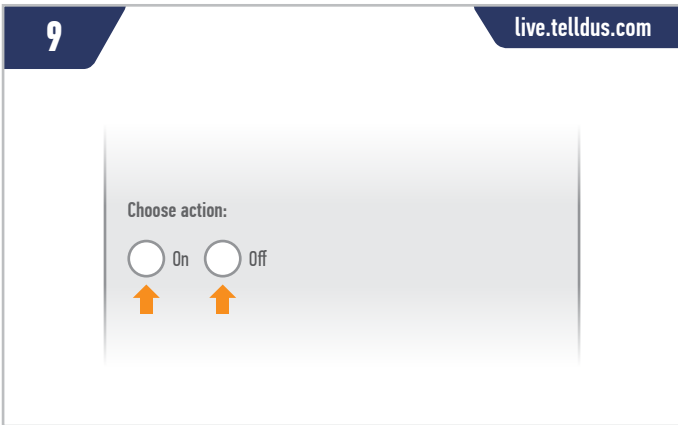
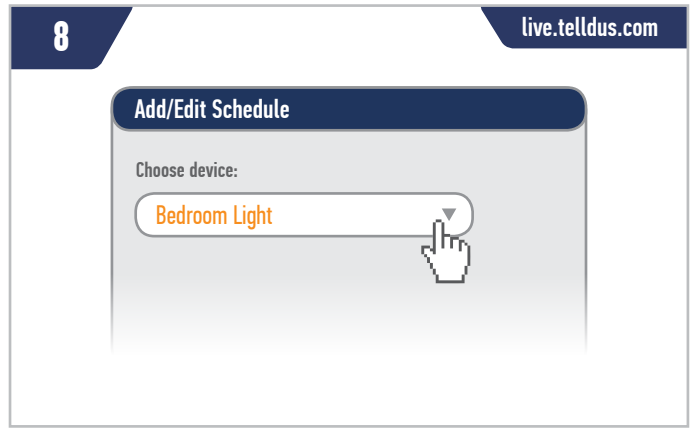
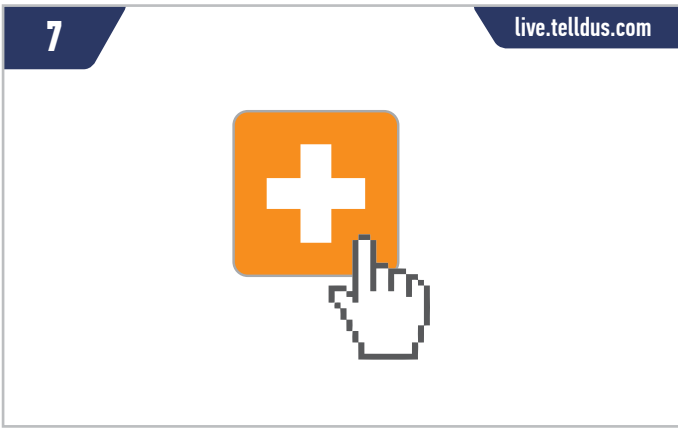


5 live.tellus.com



6 live.tellus.com





Tip! If you want the lights to turn on before or after, but still relative to, the sunrise/sunset time you can use offset.