



**GUIDE**

# CREATE A MACRO/SCENE

You can easily create macros that turns on, turns off or dims multiple devices with just a tap, soft indoor lighting, etc.

**LET'S GET STARTED!**

**YOU WILL NEED**

-  ONE OR MORE (DIMMABLE) SOCKET RECEIVERS
-  TELLDUS LIVE!

1 live.telldus.com



live.telldus.com

Control Devices

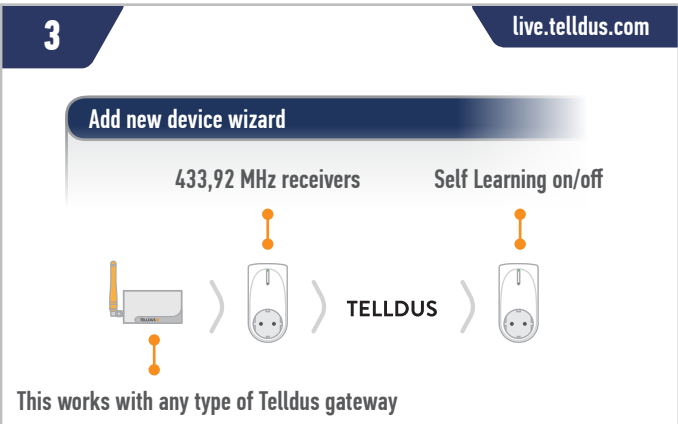
2 live.telldus.com



live.telldus.com

Add a new device

3 live.telldus.com



live.telldus.com

Add new device wizard

433,92 MHz receivers      Self Learning on/off

TELLDUS

This works with any type of Telldus gateway

4 live.telldus.com



live.telldus.com

Add new device wizard

Name: My Scene

Next

5 live.telldus.com



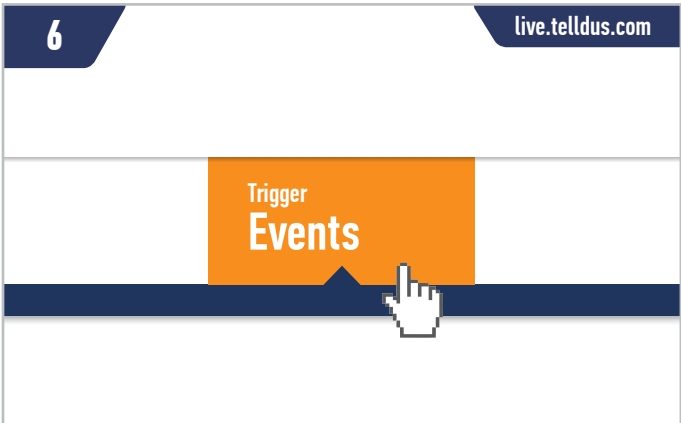
live.telldus.com

~~Learn~~

This is not an actual device and only used for controlling your device, so skip the Learn step.

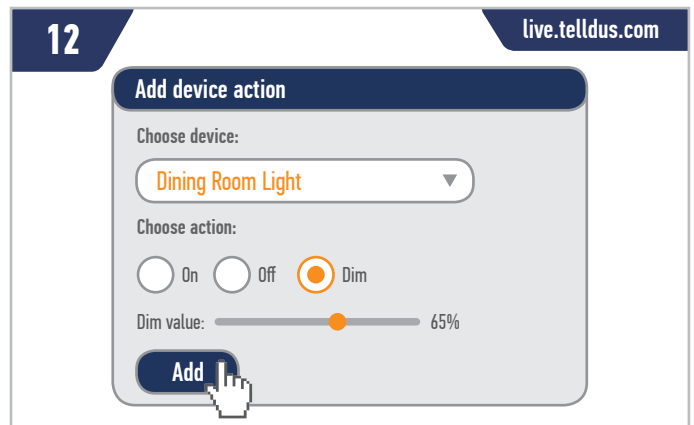
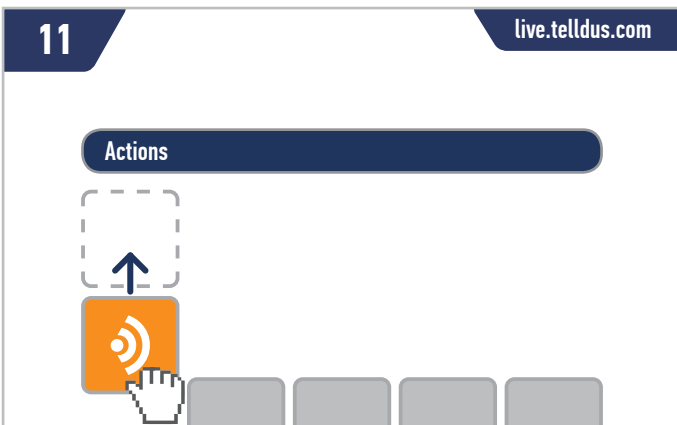
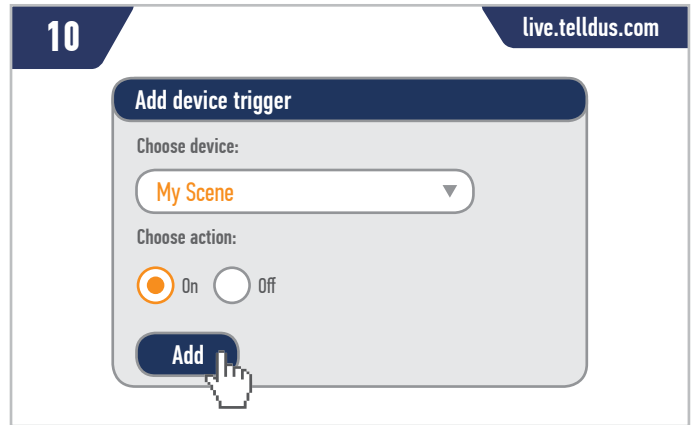
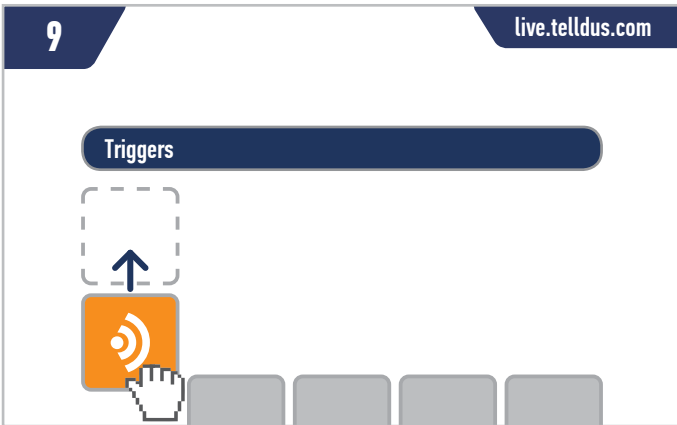
Done


6 live.telldus.com



live.telldus.com

Trigger Events



 **Tip!** If you want to be able to turn the lights off using the same device, create one more event. Add a device trigger with the state "off" for your newly created device and add a device action that turns the light off.