

GUIDE

CONTROL A Z-WAVE DEVICE WITH 433MHZ REMOTE CONTROL

This guide shows a smart and easy way to control your Z-Wave devices with a regular 433 MHz remote control to avoid having to pick up your phone all the time. The guide will assume that you have your Z-Wave device already included.

LET'S GET STARTED!

YOU WILL NEED

-  TELLSTICK ZNET LITE V2
-  TELLDUS 433MHZ REMOTE CONTROL
-  TELLDUS LIVE!
-  Z-WAVE OUTLET

1 live.telldus.com



live.telldus.com

Control Devices

+

2 live.telldus.com

Add new device wizard

Choose the location for your new device:

- Home TellStick ZNet Lite V2
- Office TellStick ZNet Lite V2

Note! This step will only be shown if you have more than one Location installed on the same account.

3 live.telldus.com

Add new device wizard

Select your device type:

- Z-WAVE
- Z-WAVE Secure
- 433,92 MHz receivers
- Group

4 live.telldus.com

Add new device wizard

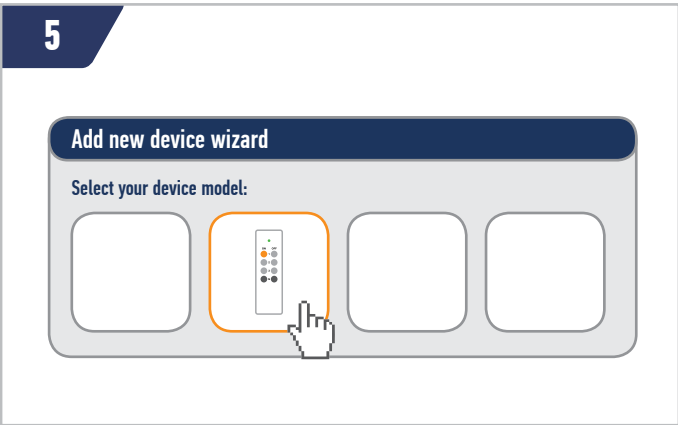
Select your device brand:

- TELLDUS

5 live.telldus.com

Add new device wizard

Select your device model:



6 live.telldus.com

Add new device wizard

Enter name:

Name: Remote Control - Button 1


Next

7 live.tellus.com




! Press the ON button (1) on the remote control until the progress bar reaches 100%.

8 live.tellus.com



9 live.tellus.com



10 live.tellus.com


Create new event

Event name:

Create

11 live.tellus.com

Triggers



12 live.tellus.com

Add device trigger

Choose device:

Choose action:
 On Off

Add

13 live.tellus.com

Actions



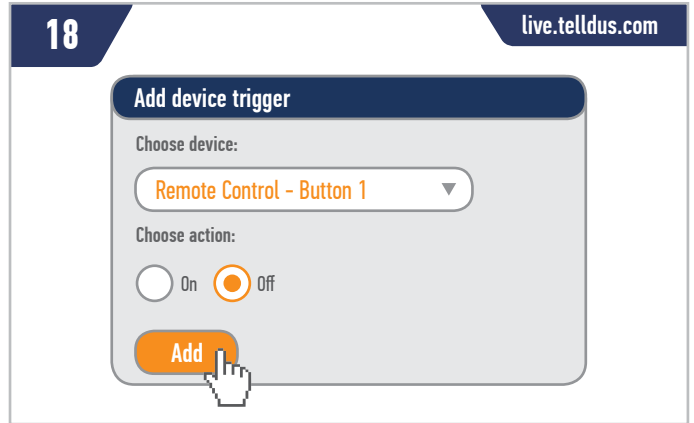
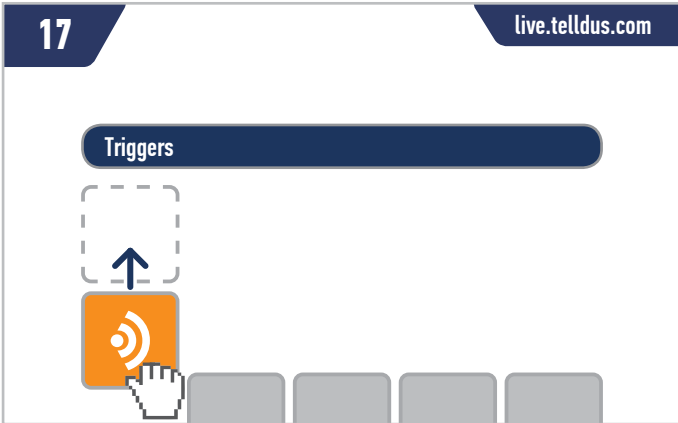
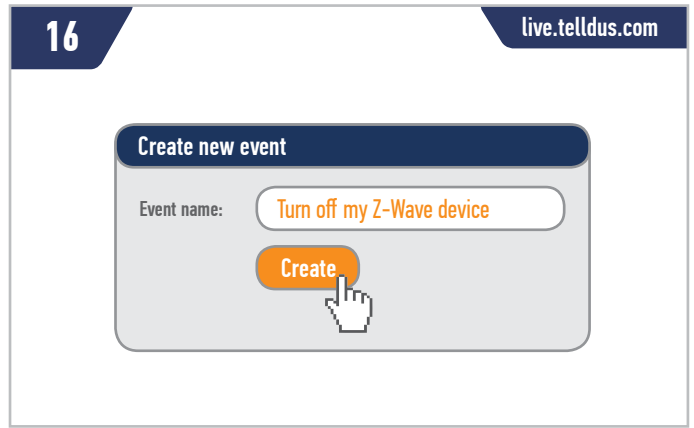
14 live.tellus.com


Add device action

Choose device:

Choose action:
 On Off

Add



 **Tip!** Repeat guide for button 2 and 3 if you want to control more devices. You can also control multiple devices per button by adding more than one device action in the events to turn on multiple lights by the press of one button.