

**GUIDE**

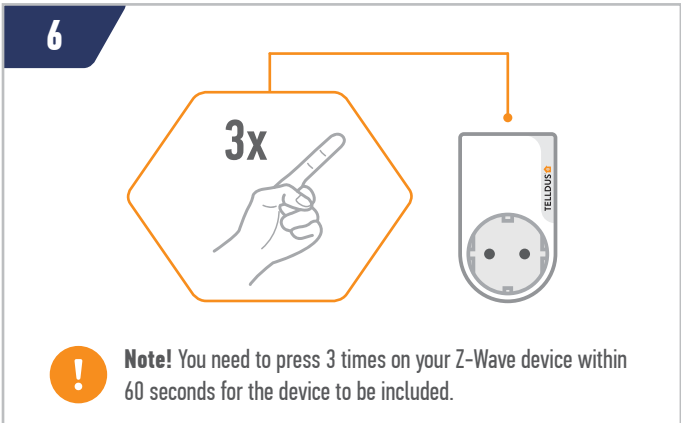
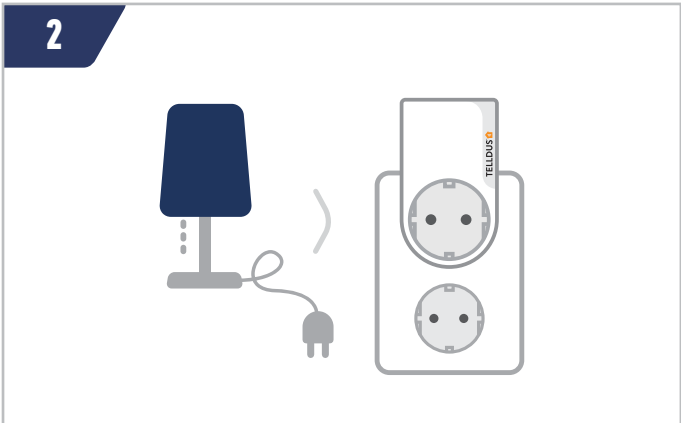
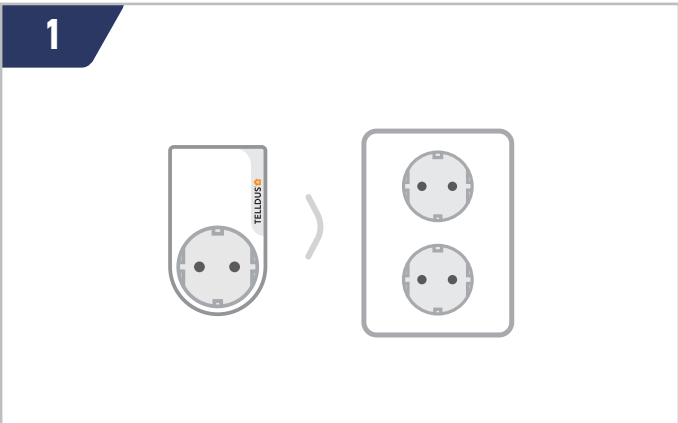
# ADD A NEW Z-WAVE DEVICE

Usually one of the first things to do when starting to use Telldus Live! is to add a device. This guide covers Z-Wave devices and assumes that your Location is already set up.

**LET'S GET STARTED!**

**YOU WILL NEED**

-  Z-WAVE WALL SOCKET RECEIVER
-  TELLSTICK ZNET LITE





**Tip!** Besides a wall socket receiver the procedure is the same for most other Z-Wave devices.