

TELLDUS 

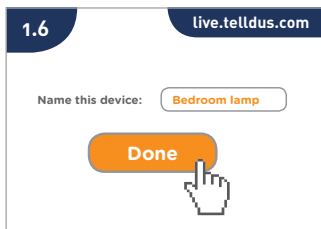
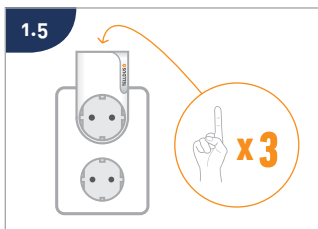
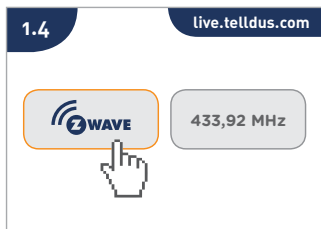
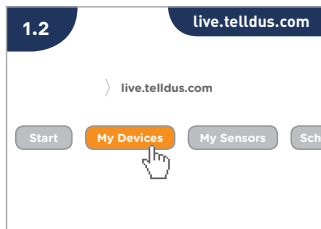
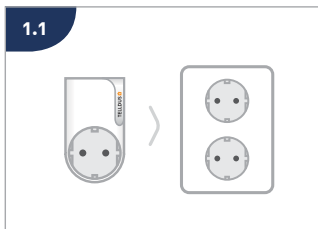
QUICK GUIDE

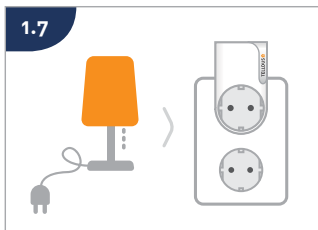
PLUG-IN SWITCH ON/OFF



1. INCLUDING THE DEVICE IN TELLDUS LIVE!

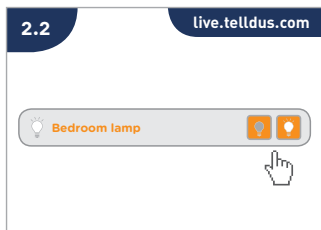
1. LÄGGA TILL ENHETEN I TELLDUS LIVE!





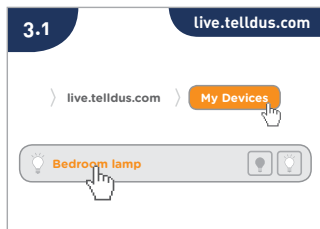
2. CONTROLLING THE DEVICE

2. STYRA ENHETEN



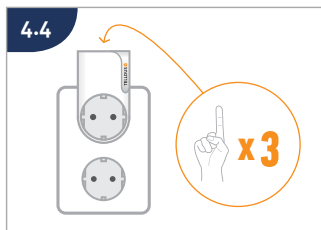
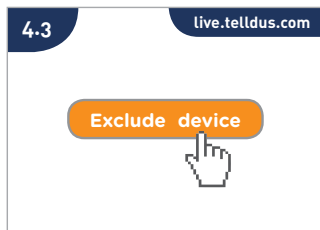
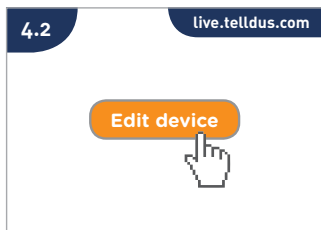
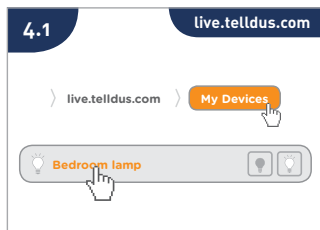
3. EDIT THE DEVICE

3. REDIGERA ENHETEN



4. EXCLUDE THE DEVICE

4. EXKLUDERA ENHETEN



5. TECHNICAL MANUAL

5

Download complete technical manual and find more useful information at:
www.telldus.com

6. ASSOCIATIONS

6

Association group 1 - Lifeline - Plug status - Max 1 node

The plug will send it's status to the node in this group whenever the status of the plug changes.

Lifeline is normally used to send the plug status to the main controller / gateway.

Association group 2 - Control other devices - Max 10 nodes

The plug will send Basic Set control signals to the nodes in this group whenever the status of the plug changes. This will work like a master/slave solution.

7. CONFIGURATIONS

7

Parameter no 1 - Countdown timer

Number of minutes before it auto-shuts down.

Default value: 0 (disabled)

Size: 1 byte

Possible values: 0-254

Unit: minutes

Parameter no 2 - Remember device status after power failure.

Define how the plug will react after the power supply is back on.

Default value: 1 (remember status)

Size: 1 byte

Possible values: 0: Always off, 1: Remember status, 2: Always on.

Parameter no 3 - LED indicator

Set the intensity of the LED indicator

Default value: 255

Size: 1 byte

Possible values: 0-100

8. RESET

8

Reset the device

Method 1

Remove the device from the Z-Wave network. This will reset the device to factory defaults.

Method 2:

Reset the device by:

Press and hold the button until the LED starts flashing white (approx. 6 seconds).

Press the button once more, short.

The device will now reset to factory defaults. The LED will now flash red, indicating that it's no longer added in any Z-Wave network.

This procedure is called 'Device Reset Locally' and it should only be used when the primary controller is missing or inoperable.

TELLDUS 

WWW.TELLDUS.COM

