

TELLDUS 

# QUICK GUIDE

SENSOR SWITCH  
MAGNETIC

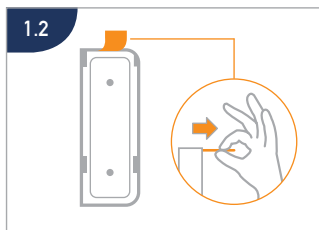
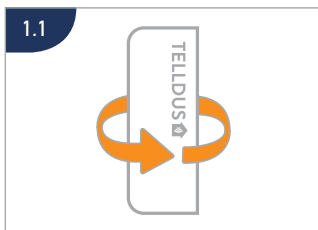


## 1. REMOVE THE BATTERY STRIP

1. TA BORT REMSAN FÖR BATTERIET

1. TA BORT REMSAN FÖR BATTERIET (NO)

1. TA BORT REMSAN FÖR BATTERIET (FI)



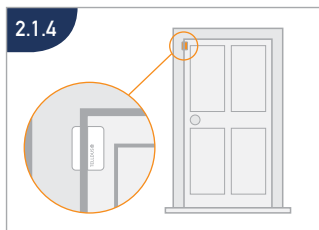
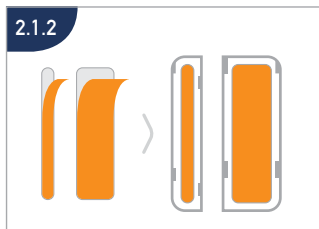
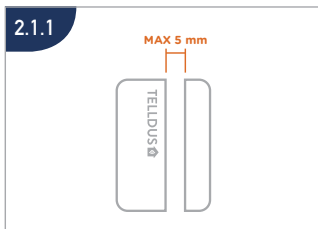
## 2. MOUNTING ON DOOR/WINDOW

2. MONTERING PÅ DÖRR/FÖNSTER

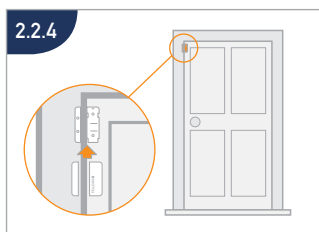
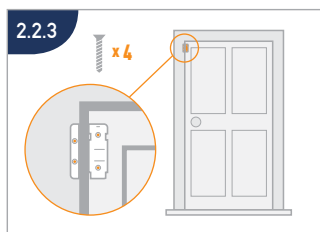
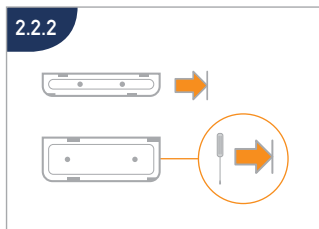
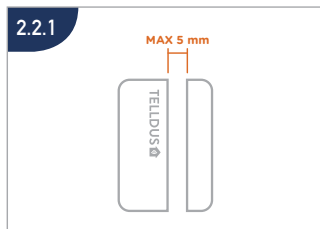
2. MONTERING PÅ DÖRR/FÖNSTER (NO)

2. MONTERING PÅ DÖRR/FÖNSTER (FI)

2.1. MOUNTING WITH ADHESIVE TAPE / 2.1. MONTERING MED DUBBELHÄFTANDE TEJP



## 2.2. MOUNTING WITH SCREWS / 2.1. MONTERING MED SKRUV

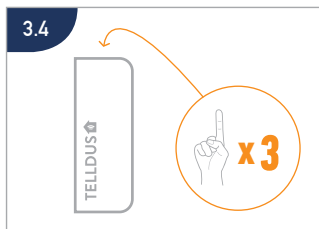
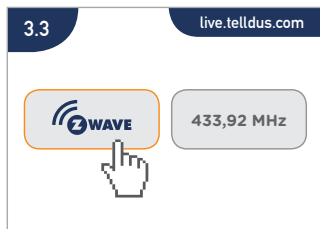
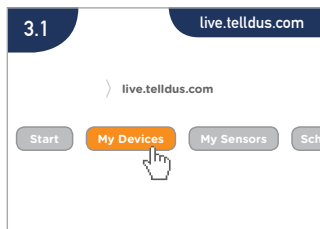


## 3. INCLUDING THE DEVICE IN TELLEDUS LIVE!

3. LÄGGA TILL ENHETEN I TELLEDUS LIVE!

3. LÄGGA TILL ENHETEN I TELLEDUS LIVE! (NO)

3. LÄGGA TILL ENHETEN I TELLEDUS LIVE! (FI)

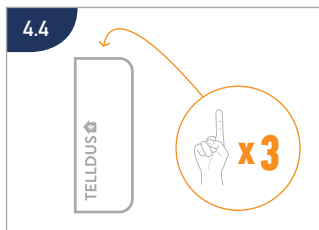
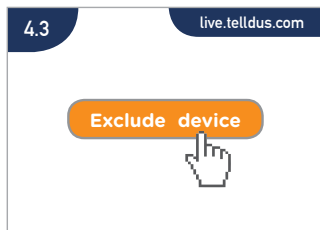
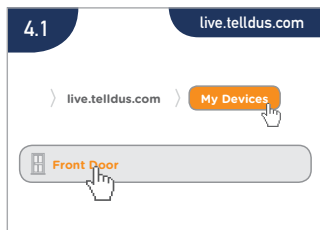


## 4. EXCLUDE THE DEVICE

4. EXKLUDERA ENHETEN (NO)

4. EXKLUDERA ENHETEN (NO)

4. EXKLUDERA ENHETEN (FI)

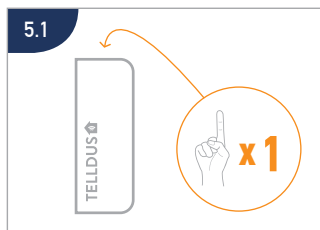


## 5. TRIGGER WAKE-UP

5. TRIGGA WAKE-UP (NO)

5. TRIGGA WAKE-UP (NO)

5. TRIGGA WAKE-UP (FI)

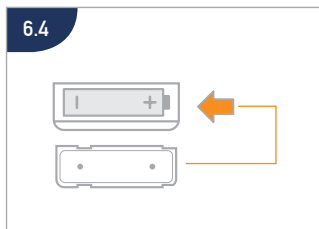
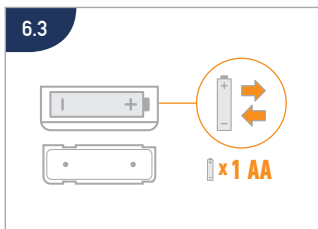
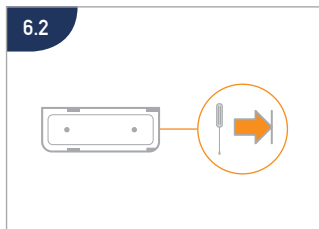
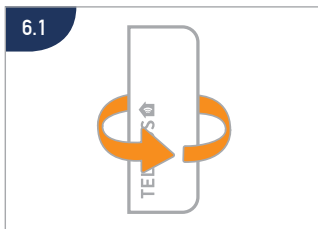


## 6. CHANGE THE BATTERY

6. BYTA BATTERI

6. BYTA BATTERI (NO)

6. BYTA BATTERI (FI)





**TELLDUS** 

[WWW.TELLDUS.COM](http://WWW.TELLDUS.COM)

